

Redefining the Future of Robotic chess



Advanced Full Piece Recognition

Capable of moving multiple pieces simultaneously, faster and more practical

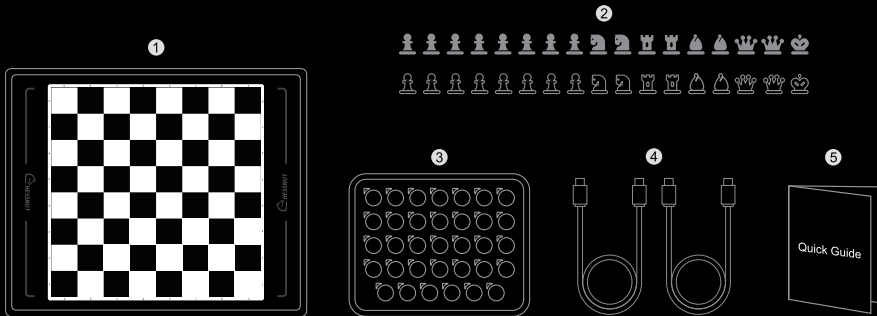
Connectivity expandability

Your board, your opponent, your move



In the box

- ❶ Chessnut Move Robotic Chessboard
- ❷ 34 chess pieces with self-moving bases
- ❸ Charging pad
- ❹ Charging Cable*2
- ❺ Quick Guide



MOVE

ROBOTIC CHESS SET

Quick Guide (English)

Please scan the corresponding QR code to follow us.



Official Website



Facebook



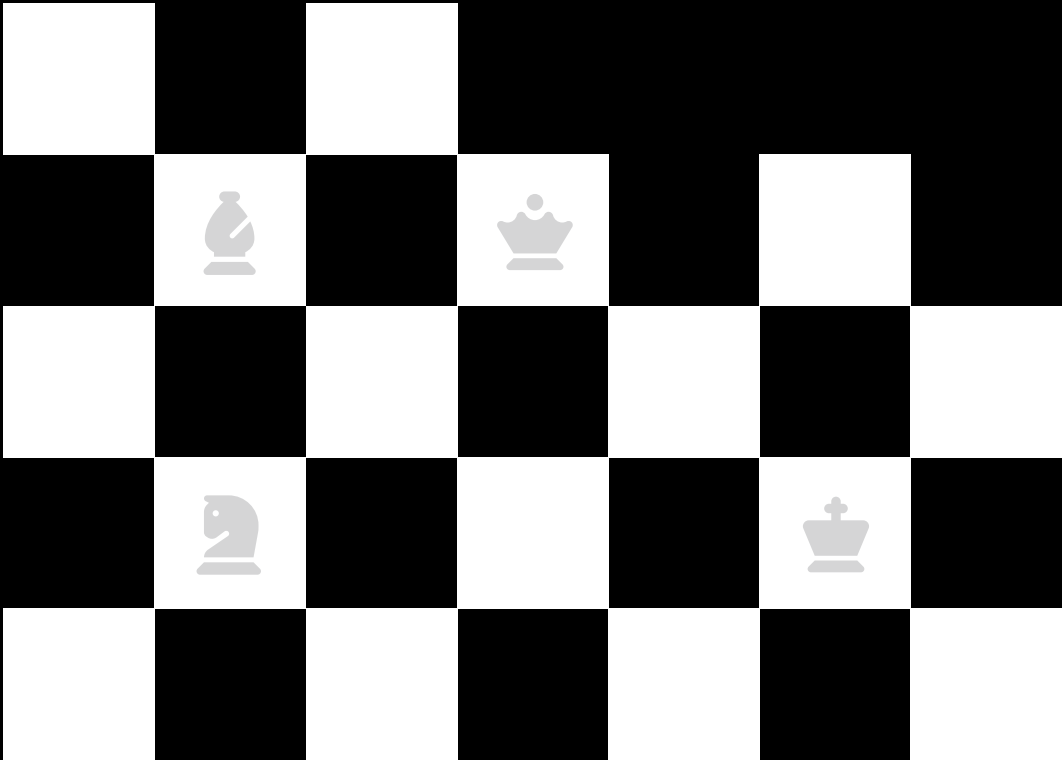
Youtube



Instagram



Twitter





Since the pieces are set to shutdown mode during production, **please note that they need to be placed on the charging pad and powered on once for activation before first use.** This activation is only required during initial setup or after manual shutdown (e.g., when intentionally turned off via the App to prevent battery depletion during prolonged storage). No frequent reactivation is needed under normal circumstances.

1. Introduction

Warmly welcome to Chessnut Move. The Chessnut Move is Chessnut's latest innovation in robotic chessboards. Combining multiple cutting-edge technologies from Chessnut, it elevates the robotic chessboard experience to an entirely new level. We hope you have an enjoyable time with Chessnut Move!

2. Key Features



Automated Chess Piece Movement

Chessnut Move can simultaneously reposition all chess pieces, distinguishing itself from other robotic chessboards. Players can quickly reset the board to its starting position or set up specific configurations for study. This dramatically improves gameplay speed and efficiency, making robotic chessboards practical and indispensable for serious players.



Advanced Full Piece Recognition

Each Piece Features Precise ID and Position Recognition, Upgrades from Grid-based Recognition to Full-board Positional Accuracy with a Resolution of 1mm.



Endgame Import and Video Integration

Chessnut Move allows users to import endgame positions or start games based on chess videos. Its video integration feature lets players replicate the piece movements from videos automatically, offering an immersive experience akin to live tournament participation.



Low Latency and Fast Movement

With a 10Hz refresh rate and a 0.1-second response time, Chessnut Move ensures a seamless gaming experience. Unlike traditional robotic chess systems, its technology enables independent and instant movements for each piece, with average move times under three seconds—perfect for fast-paced games like blitz chess.



Voice Control

Chessnut Move supports voice commands, enabling players to control the board with ease. This intelligent feature enhances convenience and interaction.

3. Button and LED Indicators Guide

❶ Power Button & 🔌 Indicator

- **Power On:** Press and hold for 3seconds.The power indicator will turn to a red breathing light, then change to a steady green light after approximately 30 seconds to confirm successful startup.
- **Power Off:** Press and hold for 3 seconds. The power indicator will turn to a green breathing light, then turn off completely after a short delay to confirm shutdown.
- **Low Battery:** The power indicator 🔌 blinks red.
- **Power On Charging:** 🔌 Green blinking light.
- **Power Off Charging:** 🔌 Steady red light.
- **Fully Charged:** 🔌 Steady green light.

❷ Bluetooth Button & 📶 Indicator

- **Short Press:** Activates Bluetooth broadcast mode (📶 blue blinking light).
- **Connected:** 📶 Blue steady light indicates successful pairing.
- **Turn Off Bluetooth:** Long press the Bluetooth button to disable.

❸ M Button (Mode/Selection) & 🏁 Indicator

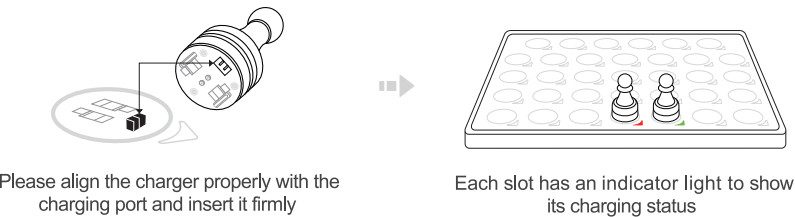
- **Side Selection (Offline Bot / OTB Game)**
 - Short press to cycle: White side → Black side → Both sides.
 - Long press to confirm selection.
- **Engine Difficulty (AI Mode)**
 - After side selection, short press to adjust difficulty (Level 1–8).
 - Long press to confirm — 🏁 solid yellow light indicates game start.
 - Game ends when the yellow light turns off.
- Note:**
 - OTB Game Mode: No engine difficulty selection; game starts directly.
 - End Game Midway: Long press for 3 seconds (yellow light turns off).
 - Bluetooth must be disconnected when using this button.
 - Completed games are automatically saved in the board's memory. When connected to the Chessnut App, you can upload them to your Chessnut Account for in-depth analysis, review, and replay.

❹ Board Setup Button & 🚦 Indicator

- **Standard Setup:** Short press—reset the board to the standard opening position. (Conditions: Not active in an offline game)
- When the indicator light turns 🚦 red, this signals that one or more pieces have low battery. (below 20% charge). While these pieces will continue to function for a limited time, we recommend charging them soon to avoid mid-game interruptions. You may choose to charge immediately or continue playing temporarily based on your needs.



4. Charging the Chess Pieces



❶ To charge your Move pieces

- Place them on the included dedicated charging pad (each slot has an indicator light).
- When properly aligned:
 - 🔴 Red light: Charging in progress
 - 🟢 Green light: Fully charged

❷ Power Adapter Recommendation

- For optimal performance, use a 20W+ PD charger.
 - Note:** While lower-power/non-PD chargers will still work (Chessnut optimized the charging logic), you may experience:
 - Slower charging speeds
 - Occasional indicator light flickering
 - Other minor irregularities

5. Replacing the Piece Base

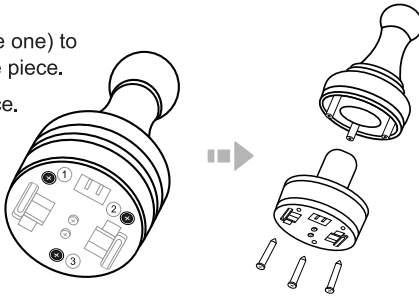
Chessnut Move pieces are designed with user-replaceable bases for easy maintenance. Follow these steps if your piece base becomes damaged or unresponsive:

❶ Remove the Defective Base

- Use the included screwdriver (or a compatible one) to loosen the screws ❶ ❷ ❸ on the bottom of the piece.
- Gently separate the base from the chess piece.

❷ Install the New Base

- Align the replacement base with the piece.
- Secure it by tightening all screws firmly.



❸ Complete Setup in App

- Open the Chessnut App → Navigate to the device management page → Complete the "Move & Piece Matching" procedure.
 - Note:** Since Move uses 2.4GHz frequency to network and control the pieces, you may encounter severe interference on certain channels in different environments. If you consistently experience obviously abnormal piece movements, you can try performing this recalibration procedure to rematch the pieces and switch to less interfered channels. Your piece will then be ready for gameplay.

6.Connecting the Board to the App

Connection Steps

❶ Download the App

- Install the official Chessnut App from your platform's app store (iOS/Android) or a supported third-party chess app compatible with Chessnut products.

❷ Enable Bluetooth Pairing Mode

- Ensure the board's Bluetooth indicator is 📶 flashing blue (refer to Section 3: 📶 Bluetooth Button).
- Tap the Bluetooth connection button in the app.

❸ Successful Connection

- Once paired, the Bluetooth light will stay solid blue, and the app will display the board's status.

❹ Key App Features

Once connected, the app unlocks powerful functionalities (with more to come in future updates):

- **Enhanced Bot Games:** varying difficulty levels and styles.
- **Online Play:** seamless integration with Chess.com/Lichess.
- **Game Analysis:** move suggestions, mistake highlights, and scoring.
- **Career Mode:** track progress, earn achievements, and level up.
- **Clock Mode:** for OTB/tournament-style timed games.
- **Game Records:** save and review past matches.
- **Voice Control:** hands-free move commands.
- **More...**



For detailed tutorials,
Please scan the code to visit

🔧 Troubleshooting Failed Connections

- Do NOT pair via phone settings:
 - Manually connecting through your phone's Bluetooth settings may cause app connection failures. Always use the app for pairing.
- Grant Required Permissions:
 - Location permission must be enabled for the app (Android/iOS).
 - Ensure device location/GPS is turned on (required for BLE connectivity per Android's official guidelines).
 - Note:** Chessnut only requests GPS/location permissions for BLE pairing purposes. We strictly adhere to privacy best practices and never collect, store, or use your location data without explicit user consent.