

CHESSNUT APP

USER MANUAL V1.0

| | | |
|-----------|---|----|
| 01 | Introduction | |
| | 1. Welcome to Chessnut! | 1 |
| | 2. About This Manual | 1 |
| | 3. Key Features at a Glance | 1 |
| 02 | Getting Started | |
| | 1. Download the App | 1 |
| | 2. Chessnut Account | |
| | Sign up | 2 |
| | Sign in | 2 |
| | Forget Password | 2 |
| | 3. Pairing Your Chessnut Board | |
| | Prepare the Board | 3 |
| | Connect via App | 3 |
| | Confirm Connection | 3 |
| 03 | Main Features & How to Use Them | |
| | 1. Bot Match | |
| | Engine Selection | 4 |
| | Variants | 4 |
| | To Play | 5 |
| | Difficulty Settings | 5 |
| | Time Control | 5 |
| | Advanced Engine Settings | 5 |
| | Navigation & Tools | 5 |
| | Function Menu | 5 |
| | Post-Game Popup | 6 |
| | 2. Online Match | |
| | Lichess Integration (Requires Chessnut Account Login) | 6 |
| | Chess.com Integration | 7 |
| | 3. Game Analysis (Analysis) | |
| | Basic Analysis Features | 7 |
| | Board Replay (Move Exclusive) | 8 |
| | Practical Analysis Tips | 8 |
| | 4. Career Mode (Login Required) | |
| | How It Works | 9 |
| | 5. Game Record (Login Required) | |
| | Interface Overview | 9 |
| | How to Use | 10 |
| | 6. Clock Mode | |
| | Setup & Starting a Game | 10 |
| | In-Game Interface | 11 |

◆ Welcome to Chessnut!

Thank you for choosing Chessnut—your gateway to a smarter and more immersive chess experience. By pairing your Chessnut board with the Chessnut App, you unlock the full potential of your device, from AI-powered training to competitive online play.

◆ About This Manual

This guide is based on the **iOS version** of the Chessnut App. While the Android version offers nearly identical functionality, minor interface differences may exist. If you encounter any issues not covered here, please contact our support team at contact@chessnutech.com. We're committed to helping you resolve problems quickly and ensuring seamless gameplay.

◆ Key Features at a Glance



Bot Match

Play against AI bots of varying skill levels



Online Match

Challenge global opponents



Analysis Mode

Challenge global opponents



Training Mode

Access advanced engines and career stats(requires login)

Let's get started!

◆ Download the App

Scan the QR code below to download from your device's app store.



iOS: <https://apps.apple.com/us/app/new-chessnut-elevate-play/id6502445067>

Android: <https://play.google.com/store/search?q=chessnut&c=apps&hl=en>

◆ Chessnut Account

To unlock **full features** (Lichess online games, Engine Mode, Career Mode, Game Records), follow these steps:

Sign up

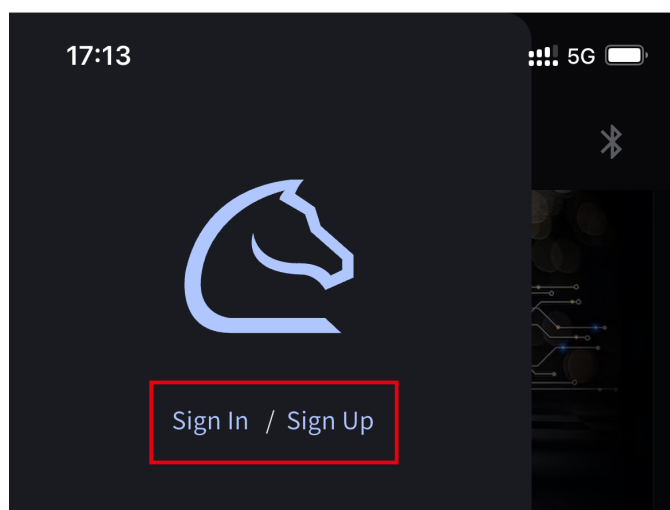
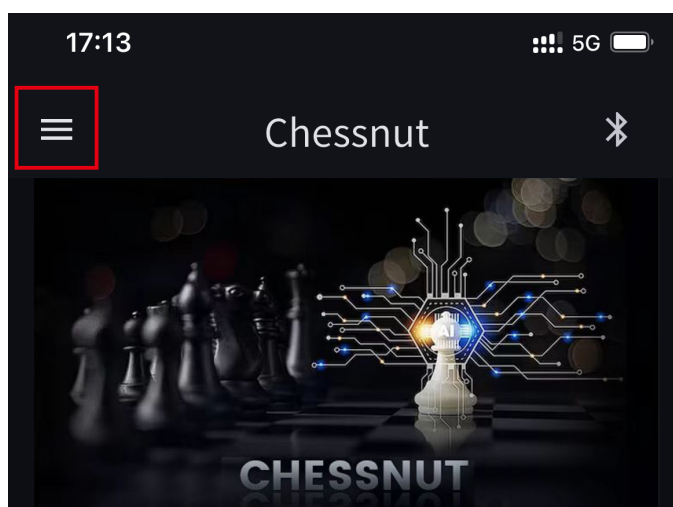
- ① **Open Menu:** Tap the **≡ menu icon** (top-left corner of the home screen)
- ② **Start Registration:** Select "**Sign Up**" from the sidebar
- ③ **Enter Information:** Fill in the necessary information
- ④ **Agree to Terms:** Check the box to accept Chessnut's **Privacy Policy** and **Terms of Service**
- ⑤ **Complete Registration:** Tap "**Submit**" to finish the registration

Sign in

- ① Registered Chessnut account users can directly log in using their username or email
- ② Enter your email or username on the login page
- ③ Enter your password and choose the "Remember Username" or "Remember Password" option for quick access next time
- ④ You must check the "Accept Privacy Policy" checkbox to successfully complete the login process

Forgot Password

- ① If you forget your account password, click "Forgot Password" to enter the password reset page
- ② Enter the email address used for registration
- ③ Click "Get Verification Code" and enter the received verification code
- ④ Set and confirm a new password to complete the password reset



◆ Pairing Your Chessnut Board

STEP 1-Prepare the Board

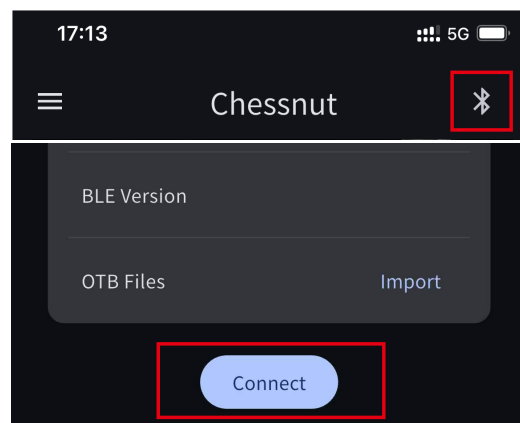
Refer to your device manual to activate **pairing mode** (typically by pressing the power/bluetooth button briefly until the Bluetooth indicator blinks).

STEP 2- Connect via App

- ① Tap the **Bluetooth icon** (top-right corner of the app home screen)
- ② Select "**Connect**" – the app will automatically search for your board

STEP 3- Confirm Connection

- ① Successful pairing is indicated by:
 - **Solid Bluetooth light** on the board
 - **Device information** displayed on the app's Device page
- ② Select "Connect" – the app will automatically search for your board
- ③ The Bluetooth icon is permanently displayed in the top-right corner of all app screens to show your board's connection state:
 - **Connected:** ✱
 - **Disconnected:** ✱✱
- ④ If board moves stop updating in the app:
 - Check the Bluetooth icon immediately
 - If disconnected:
 - Tap the icon → Select "Reconnect"
 - Ensure the board is powered on and within 10m range
- ⑤ Persistent issues?
 - Restart both board and app
 - Refer to Section 2.3 for full pairing steps



Troubleshooting Failed Connections:

- Do **NOT** pair via phone settings:
Manually connecting through your phone's Bluetooth settings may cause app connection failures. Always use the app for pairing
- Grant Required Permissions:
 - Location permission must be enabled for the app (Android/iOS)
 - Ensure device location/GPS is turned on (required for BLE connectivity per Android's official guidelines)



Note: Chessnut only requests GPS/location permissions for BLE pairing purposes. We strictly adhere to privacy best practices and never collect, store, or use your location data without explicit user consent.

◆ Device Info (TBH)

03

Main Features & How to Use Them

◆ Bot Match

Play against AI chess engines with customizable difficulty and rules.

Engine Selection

Tap the dropdown at the top to choose:

• **Maia**

Human-like AI (9 difficulty levels, ELO 1100-1900)

• **Stockfish 17.1**

World-class engine (adjustable ELO 600-3190)
[Version updates automatically]

• **Lc0**

Neural-network based (strength depends on weight files).

(Insert screenshot: Annotated engine selection menu)

Variants

Set the starting position:

• **Standard**

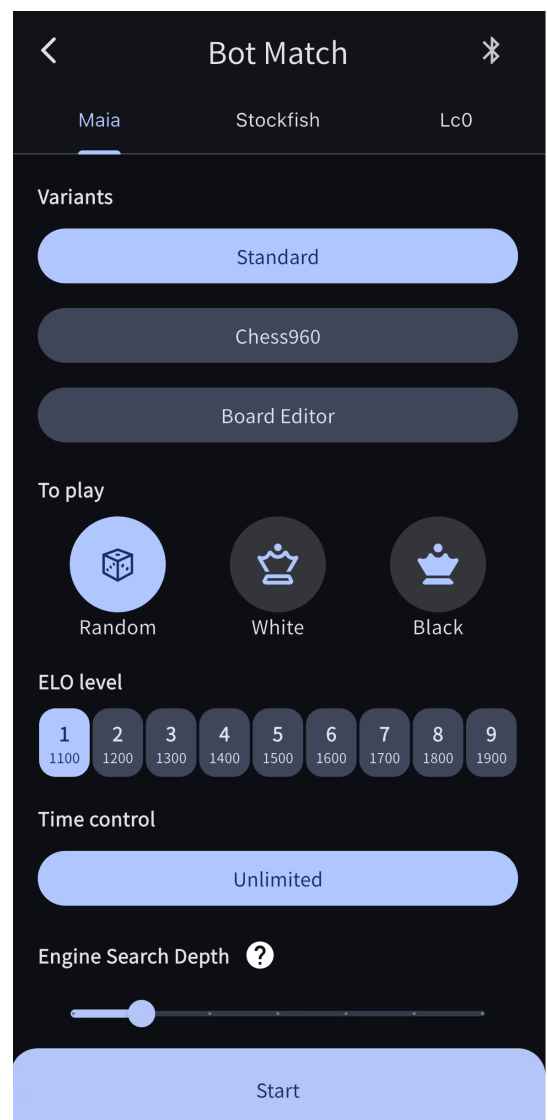
Traditional chess opening

• **Chess960**

Randomized starting back row

• **Board Editor**

- Manually place pieces using **Full Piece Recognition**
- Tap "Start from Position" to begin gameplay



To Play

Choose your side: Random / White / Black

Difficulty Settings

| Engine | Customization | Note |
|-----------|---------------------------------|----------------------------|
| Maia | 9 preset levels (1100-1900 ELO) | Simulates human playstyles |
| Stockfish | Adjustable ELO (600-3190) | Higher ELO = stronger play |
| Lc0 | Fixed by weight files | Non-customizable |

⚠ **Note:** Engine ELO is a parameter, not an exact match to FIDE ratings. Adjust based on your experience.

Time Control

- **Minutes per side:** Initial clock time for each player
- **Increment:** Seconds added per move (e.g., "+5" for 5s/move)

Advanced Engine Settings

- **Search Depth:** Higher values = stronger but slower moves
 - **Thinking Time:** Maximum time the engine spends per move
- (Insert screenshot: Time control & advanced settings panel with tooltips)

◆ In-Game Interface

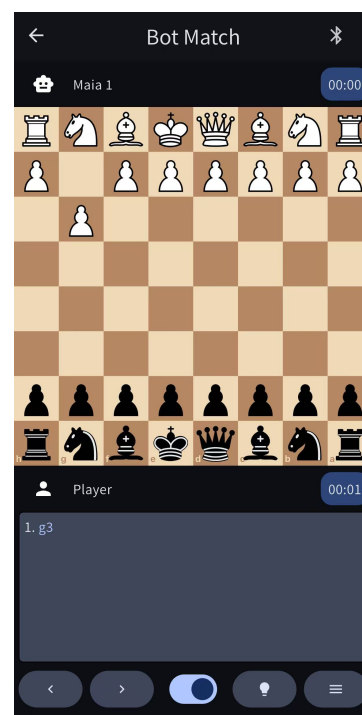
During a bot match, these controls are available:

Navigation & Tools

- **Forward/Backward Buttons:** Step through move history (PGN)
- **Move Hint Toggle:** When enabled, the board's **LEDs highlight legal moves** as you lift a piece
- **Hint Button:** Tap to reveal the engine's suggested next move

Function Menu

- **Copy FEN:** Copies current position to clipboard
- **Copy PGN:** Copies Exports game notation for sharing



- **Resign:** Ends the match (confirmation required)

(Insert screenshot: Annotated in-game UI with numbered callouts for each button)

Post-Game Popup

After "Game Over," choose:

- **Review:** Analyze the match in Analysis Mode
- **Restart:** Replay with same settings (engine/difficulty/time)
- **Exit:** Return to main menu

(Insert screenshot: Post-game dialog with 3 buttons)

◆ Online Match

Lichess Integration (Requires Chessnut Account Login)

To play on Lichess through Chessnut App:

• Authorization Process

① Prerequisite

Ensure you're logged into your **Chessnut account** in the app

② First-Time Binding:

-If unlinked or token expired (due to updates/timeouts), the app shows a "**Bind to Lichess**" prompt at the bottom.

- Tap **Bind** → Navigate to **User Info** → Tap **Bind again** → Redirect to Lichess login page
- Enter your Lichess credentials to authorize

③ Final Sign-In:

- Return to Online Match → Open **Lichess section**
- Critical Step:** Tap "**Sign in**" (top-right corner) and verify the account matches your bound Lichess account

(Insert screenshot sequence: Bind prompt → Lichess login → Sign in confirmation)

• Lichess Rules & Restrictions

- Engine assistance, or any kind of outside help, is forbidden
- Time controls: Rapid, Classical and Correspondence only. For direct challenges, games vs AI, and bulk pairing, Blitz is also possible

🔒 **Security Note:** Chessnut never stores your Lichess credentials

Chess.com Integration

• First-Time Setup

- ① When entering Chess.com section, you'll see the **official login page**
- ② **Important!** Due to Chess.com's security policies:
 - You **must enter your username and password directly** (third-party logins like Google/Facebook won't work)
 - If you previously used social login:
 - (1) Go to Chess.com **on a web browser**
 - (2) Navigate to: Settings → Account → Change Password to set a dedicated password(Insert screenshot: Chess.com login page in-app with "Direct Login Required" callout)

• Platform Limitations

🚫 Unsupported Features:

- ① **Daily Games** (cannot be played through Chessnut App)
- ② Puzzle Rush/Battle (only standard matches supported)
- ③ Platform Differences:
 - 🤖 **Android Users:** Full access to Puzzles
 - 🍏 **iOS Users:** Currently unavailable due to iOS restrictions

✅ Allowed Game Types:

- ① Rated/Casual games
- ② Bot Games
- ③ Challenges (Standard/Blitz/Rapid time controls)

🔒 **Security Note:** Chessnut never stores your Chess.com credentials

◆ Game Analysis (Analysis)

The **Analysis** feature provides a comprehensive way to study chess games using the **Stockfish engine**, with an intuitive interface that allows for deep move evaluation and interactive replay.

Basic Analysis Features

• Entering Analysis Mode

- ① From the home screen, tap "**Analysis**"
- ② Or from the Game record, select one game and tap review
- ③ The **Stockfish engine** immediately evaluates the current position, displaying key insights below the board.

Note: By using the 5th button at the bottom, you can import any chess game or position at any time—either by copying an external FEN/PGN or utilizing Chessnut's Full Piece Recognition function. You can also copy and export the current game or position to external software for further use.

• Understanding the Analysis Panel

① Move List with Scores:

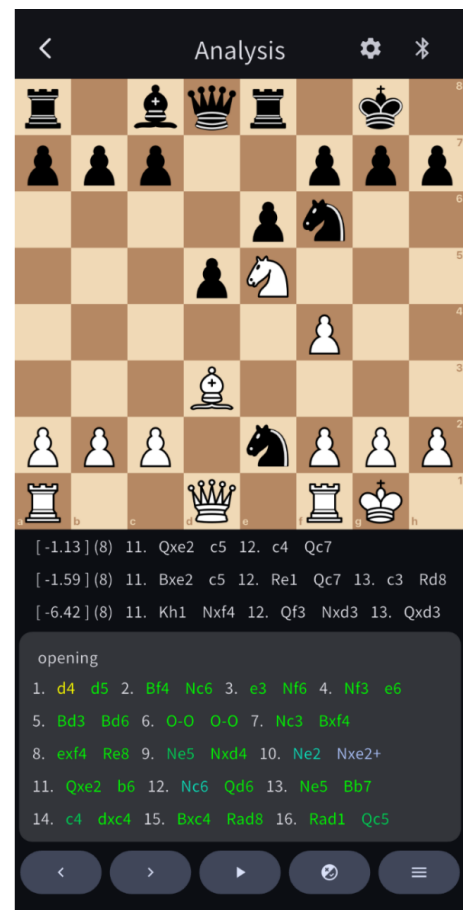
- Each move variation is accompanied by an **evaluation score** (e.g., [-1.13] indicates Black has a slight advantage)
- The number in parentheses (e.g., (8)) represents the **calculation depth** (higher = more accurate)

② PGN Analysis:

You must enter your username and password directly (third-party logins like Google/-Facebook won't work)

③ Interactive Evaluation:

- Tap the 4th button in the bottom toolbar to activate engine evaluation of all moves
- Moves are automatically color-coded based on engine assessment:
 - **Green** = Best/optimal move (within 0.5 pawns of top engine choice)
 - **Yellow** = Inaccuracy (0.5-1.5 pawn disadvantage)
 - **Red** = Mistake/blunder (>1.5 pawn disadvantage)
- Tap any colored move to see alternative engine suggestions and detailed evaluation



Board Replay (Move Exclusive)

• Automatic Replay

- ① Press the **play button** (▶) at the bottom to replay the game at a set speed.
- ② Adjust the playback interval via **settings** (⚙️, top-right)

• Manual Control

- ① Use **pause** (⏸) to stop playback and analyze critical positions
- ② The **move list** updates in real-time during replay

Practical Analysis Tips

• How to Improve:

- ① Compare your moves with the **top engine suggestions** (e.g., 11. Qxe2 vs. 11. Bxe2).

② Note **large score swings** (e.g., [-6.42] for 11. Kh1?) or Red moves to identify blunders.

Note: For complex positions, allow extra time for deeper analysis (higher depth)

◆ Career Mode (Login Required)

Career Mode is a structured progression system where you challenge increasingly stronger chess engines (Stockfish or Maia). Starting from the weakest level, you earn points for wins and lose points for defeats. As your score improves, you unlock higher difficulty levels, providing a clear benchmark for your chess improvement.

How It Works

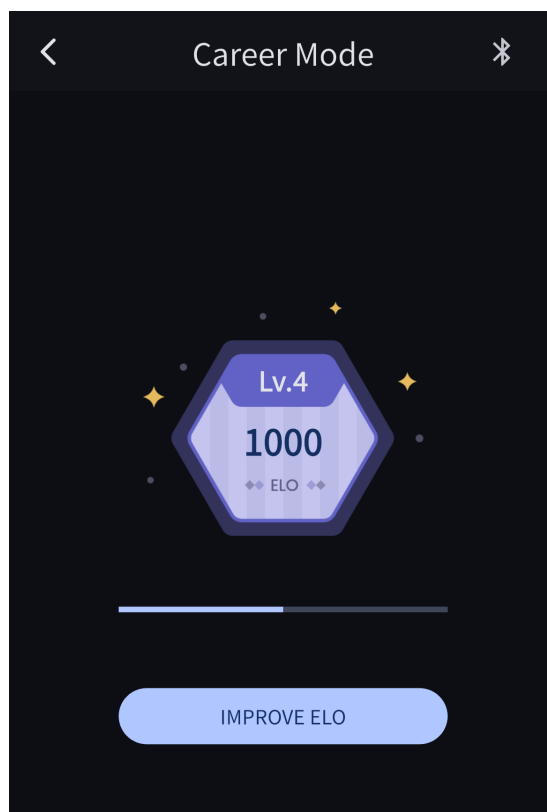
• Starting Point

- ① Begin at **600-1000 ELO** vs. the easiest AI (Maia or Stockfish)
- ② Each win grants **points**; each loss deducts **points**

• Level Progression

- ① **Level Up:** Reach the threshold to advance to the next difficulty
- ② **Level Down:** Fall below a threshold to drop a level

(Insert screenshot: Career Mode dashboard showing current level, points)



◆ Game Record(Login Required)

The **Game Record** section stores all your historical chess games, automatically synced to the cloud. Access them from any device (PC/iOS/Android/Chessmind web) for analysis, export, or resuming play.

Interface Overview

• Top Bar

- ♡ Favorite: View your bookmarked games
- ⌘ Bluetooth: Shows board connection status

• Game Cards

Each card represents a saved game with:

- ① **Chessboard Preview:** Left side shows the final position
- ② **Opponent:** Username (e.g., Adr1anRS, Chessnutech202)
- ③ **Result:** White Win/Black Win/Draw
- ④ **Time Control:** Show the game mode
- ⑤ **Date:** When the game ended (e.g., 2021.03.24)

How to Use

• View & Select Games

Tap any card to:

- **Analyze:** Jump to **Analysis Mode** (Section 3.3)
- **Resume:** Continue the game from the last position (if unfinished)

• Swipe Actions

- ① **Swipe Left:** Reveals two buttons:
 - ♡ Favorite: Bookmark for quick access
 - 📄 Copy PGN: Export game notation to clipboard
- ② **Swipe Right**
 - 🗑 Delete: Permanently remove the game (confirmation required)



◆ Clock Mode (Over-the-Board Timer)

Clock Mode is designed for **physical chessboard play** between two human players, with automatic turn switching and customizable time controls. Perfect for OTB (over-the-board) tournaments or casual games.

Setup & Starting a Game

• Entering Clock Mode

Tap "**Clock**" on the home screen → Select game type:

- Standard: Traditional chess rules
- Chess960: Randomized starting position
- Board Editor: Set up custom positions (see Section 3.1.2)

• Time Control Settings

Tap to adjust:

- **Minutes per side:** Initial time per player (e.g., 5 minutes)
- **Increment:** Seconds added per move (e.g., "+3" for 3s/move)

-**Delay:** Bronstein/Fischer clock options

• Begin Play

- ① Place pieces on your **physical Chessnut board**
- ② The app detects moves via sensors → **clock automatically switches turns**

In-Game Interface

• Top Bar

↻ **Rotate Board:** Tap to flip perspectives (Black/White)

• Timers

- ① Top: **Black's clock** (e.g., 00:00)
- ② Bottom: **White's clock** (e.g., 00:00)
- ③ Timers count down only when it's the player's turn

• Function Buttons

- ① Evaluate (Toggle On/Off): When **ON**, LEDs highlight legal moves as you lift a piece
- ② Hint: Tap to illuminate the **best move suggestion** on the board
- ③ Other Icons: Copy PGN-Export game notation

